



# Uhl Collectors Society



March, April and May 1999

## UHL JUGS AT A GLANCE

We welcome you to springtime and hope that your Uhl pottery hunts have been rewarded.

This issue will attempt to show some of the Uhl pottery liquor jugs. Please keep in mind that this is not all the jug styles produced. The next issue will have additional information also.

Remember that even though the shape of a jug might be similar other potteries produced shapes very close to the Uhl design. The Uhl liquor jugs in this article are full size and the miniature jugs will not be discussed at this time.

Don't be surprised to find a jug that will have some of the glaze ground off on its side. Many people tried to scratch out the phrase which stipulates that the container not be resold.

The tall slender Demijohn or Curacao jugs came in several designs and styles. Usually you will find a seam around the upper third portion of the jug. Handles for these jugs were an option which cost extra. The handles were hand-applied. Sizes for the Demijohn or Curacao jug were 12 ounce, 16 ounce, 26 ounce squat, 26 ounce tall and 32 ounce. Pictured are the squat and tall jug styles.

Canteen jugs are round shaped with a single handle. This design was used often for syrups and honey. They were available in half-pint and one pint sizes.

Crème de Coffee jugs were commonly a two-tone color in a single size of 25 ounces. Notice the sharp angular handle and pouring lip, which gives this jug its distinction.

Crème de Mint jugs are usually found in two-tone colors and they have no handle. Capacity of the Crème de Mint jug is 25 ounces.

Bellied jugs were made in two styles. One style has an applied handle and was produced in

solid colors. They were available in half-pint, one pint, and one-quart sizes. Sometimes you will find this design with a double applied handle.

Molded handle bellied jugs were also made by Uhl pottery and usually had a two-tone color combination. They were available in a large two-quart size. This design has been found with a round loop applied handle and solid colors. Uhl tried to satisfy its customer's requirements.

Crème de Prunella jugs were usually two-toned color. They have a distinctive loop handle on opposite sides of its long neck. Prunella jugs were produced in 8 ounce and 25 ounce sizes.

Egyptian jugs produced by Uhl pottery were available in solid colors and even had an optional ball stopper for the largest size jug. Four sizes of Egyptian jugs were made including 8 ounce, 12 ounce, 16 ounce, and 25 ounce capacity.

The 26-ounce Wine jug with a large loop handle is hard to find. It has a ribbed exterior.

Decanter jugs also have a large loop handle but they have a distinctive shoulder when compared to the above jug. However, decanter jugs have a ribbed exterior also.

Unusual is a good description for the hour glass shape of the Uhl Wine bottle. It has no handle and the capacity is 32 ounces.

Rum jugs were similar to a soda bottle shape and the capacity of this hard to find jug is 26 ounces.

Watch our next issue for more jug information.

See pages 4 and 5 for pictures of these jugs.

**Welcome new Uhl members!**

# Letter from the President

February 26, 1999

UHL Collectors Society  
Fr. Erbacher, President  
% P.O. Box 10  
Montgomery, IN 47558

Dear Members:

The plans are being "fined-tuned" for another convention in June, at The Holiday Inn, Jasper, IN. As always, this time together provides a wonderful and exciting time to renew old and new friendships alike; oh, how exciting!

Lots of work goes into the success of all events. My own special personal thanks to Elma & Bev Leslie for their dedication as the Secretary/Treasurer of our Society; untold hours they give for our benefit. For the interesting newsletter provided from Dave & Donna Swick, newsletter editors, we are thankful to you for the eagerly awaited quarterly news. And to Alvin Schwartz who this year has been in charge of the commemorative, we look forward to everyone's happiness as you behold the product; we appreciate the time and efforts by Alvin.

Lastly, remember that the colorful joy of finding those colorful pieces of UHL, is fondly shared with happy memories & friendships!

With kind personal regards for all, I remain,

Joseph F. Erbacher

**Officers  
and  
Board Members**

♦ If you have a comment or suggestion concerning the Uhl Society, you can contact any or all of the officers and board members below.

**Joseph Erbacher, President**

St. Peter Catholic Church  
P.O. Box 10  
Montgomery, IN 47558  
812-486-3149

Term: Pres. 6/97 - 6/99

**Lloyd & Marge Martin -Vice-President**

1582 Gregory Lane  
Jasper, IN 47546  
812-482-2492

Term: 6/97 - 6/99 (Pres. 6/99 - 6/01)

**Elma A. & Beverly Leslie, Sec./Treas.**

801 Poplar Street  
Boonville, IN 47601  
812-897-3681

Term: 6/98 - 6/00

**Dave & Donna Swick, Press Secretary**

506 Martin Street  
Newton, IL 62448  
618-783-3455

**Board Members**

**Herman & JoAnn Stock**

3311 Cave Avenue  
Evansville, IN 47720  
812-425-8818

Term: 6/96 - 6/99

**Alvin Schwartz**

225 Park Street  
Worthington, IN 47471  
812-875-3129

Term: 6/97 - 6/00

**Gary and Diana Abel**

RR 1 576 Hwy 61 N  
Lynnville, IN 47619  
812-922-3848

Term: 6/98 - 6/01



**Strictly  
Classified**

**REMEMBER THAT UHL  
COLLECTORS SOCIETY  
MEMBERS CAN ADVERTISE FREE  
OF CHARGE.**

**Wanted: Uhl Chicken Waterers -  
Contact Norm Spangler at the hotel  
during the Uhl Convention**

**SPECIAL NOTICE: Robert and Jerri Piper  
will be offering their collection of over 75  
quality Uhl pieces at auction, April 11,  
1999, at the Armory in Vincennes, IN,  
starting at 12 noon. Contact Gregg  
Parrott Auctions at 1-800-294-5738 for  
more details.**

**Pottery Pourri**

Prices taken from Internet  
(www.ebay.com) during month of  
March 1999

m - denotes "Marked"

One inch mini jug-m	68.89
Purple sugar bowl-m	72.00
Round bellied pitcher sponged	460.00
Orange jar unglazed	25.00
Black elephant jug	45.00
#124 blue pitcher-m	91.00
Brown barrel pitcher-m	23.50
Rose cut flower vase-m	28.00
#176 yellow bellied jug	19.50
Blue grapes w/lattice pitcher	93.75
Brown mini globe jar	51.00
Blue square mini jug	33.62
Blue elephant mini jug	91.65
Blue grecian mini jug	28.00
Yellow 12 oz. Flagon stein	11.49

**G**reetings Uhl Club Members:

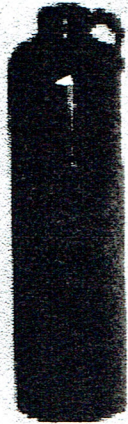
We have enjoyed our experience being on the Board of Directors, but our time is almost up. Serving on the board gave us the opportunity to learn more about Uhl in general and learn how the club is run. The people we have met have, for the most part, been friendly and informative. Even though disagreements occur with the fellow officers and sometimes the discussions can become "heated" in the end what is best for the club members wins. All the officers are volunteers trying to make this organization the best it can be.

Evansville is our home. We have 1 son and wife, 3 daughters who are all married and 10 grandchildren. We have tried to instill a little of our "collector" attitude into all of them.

Hope to see you at the 1999 Convention.

Fellow Uhlers,

Herman and Jo Ann Stock



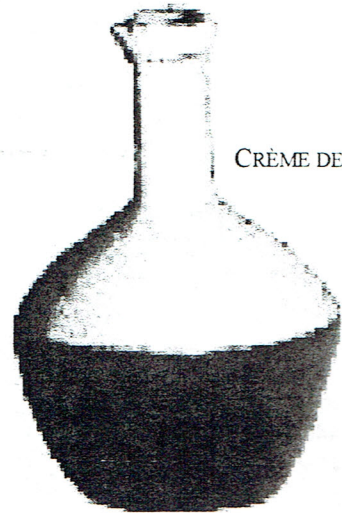
SQUAT AND TALL DEMIJON OR CURACAO JUGS



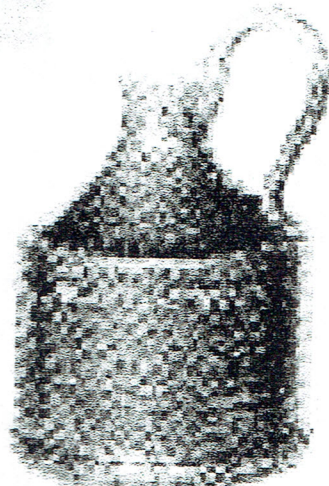
CANTEEN JUG



CRÈME DE COFFEE JUG



CRÈME DE MINT JUG



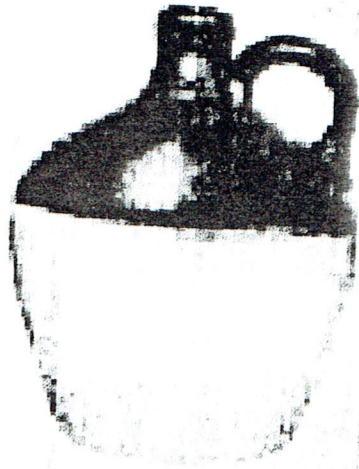
DECANTER JUG



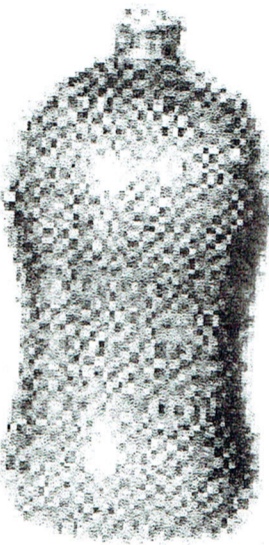
WINE JUG



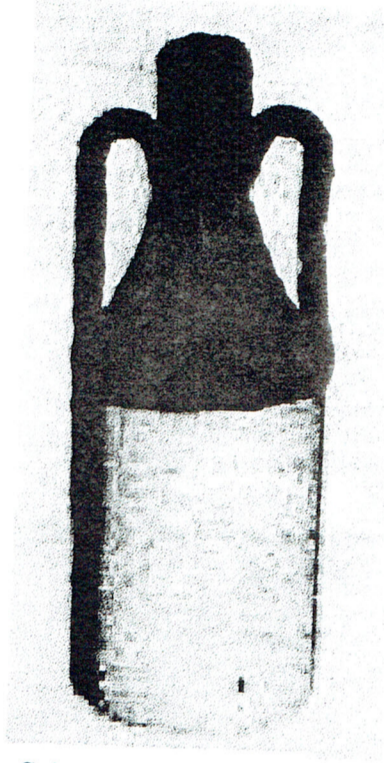
BELLIED JUG (APPLIED)



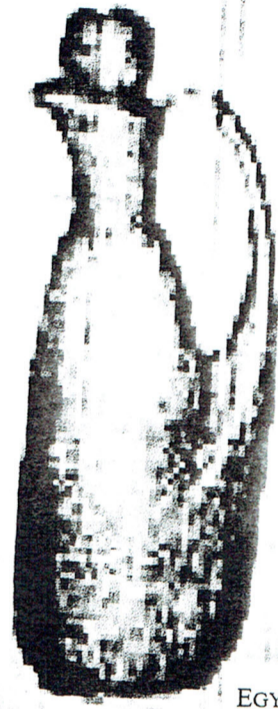
BELLIED JUG (MOLDED)



WINE BOTTLE



CRÈME DE PRUNELLA JUG



EGYPTIAN JUG



RUM JUG

**COMMEMORATIVE  
NOTICE**

PLEASE NOTIFY SECRETARY/TREASURER OF ANY DAMAGED COMMEMORATIVE PRIOR TO **AUGUST 15, 1999.**

ANY DAMAGED COMMEMORATIVE MUST BE RETURNED FOR A REPLACEMENT BY THIS DATE.

**1999**

**\*\*\* CONVENTION \*\*\***

**The Jasper Holiday Inn  
Jasper, IN**

**812-482-5555**

**FRIDAY JUNE 25, 1999  
SATURDAY JUNE 26, 1999**

24 & 25

**ELECTION NOTICE**  
**POSITIONS UP FOR ELECTION AT**  
**CONVENTION ARE:**  
**VICE PRESIDENT - 6/99 - 6/01**  
**(PRES. 6/01 - 6/03)**

**THE NEW MEMBER LIST  
WILL BE RUN IN THE NEXT  
NEWSLETTER.**

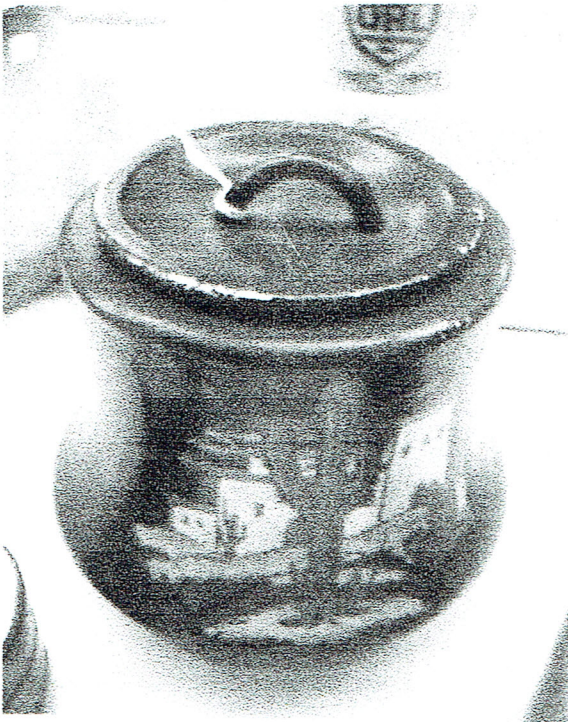
**IS IT UHL?**

How does your Uhl piece finish on a four point scale?

1. Is it a known shape or size?
2. Is the glaze consistent with Uhl production?
3. Is the clay similar to known Uhl production?
4. Does it have any mold numbers or marks consistent with Uhl pottery?

Next time you discuss a piece with some one cover these points and hopefully you will score on at least 3 of these points.

## PICTURES FROM AN EVANSVILLE TAG SALE



March, April and May 1999

### Large Jane Uhl Plate



see inside...

Page 8

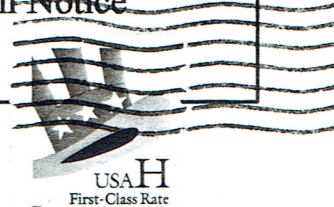
Classifieds

New Members

Election Notice

Jugs at a Glance

Pictures



Dave and Donna Swick  
506 Martin Street  
Newton, IL 62448

Membership #111  
DALE BLANN  
2538 E APPALOOSA  
VINCENNES, IN 47591